

YOUR AUTHORIZED DISTRIBUTOR FOR THE FOLLOWING BRANDS:

AC VS Inverters

BALDOR
BOSTON / ALTRA
MINARIK
MOTORTRONICS
SAFTRONICS
TOSHIBA
WEG

Alarms

PFANNENBERG

Circuit Board Repair

QIE
KF GROUP

Circuit Breakers

TOSHIBA
WEG

Circuit Testing

SANTRONICS

DC Controllers

BALDOR
BOSTON GEAR
MINARIK
SAFTRONICS
TOSHIBA

Disconnect Switches

TOSHIBA
WEG

Electric Motors

BALDOR / RELIANCE
IDC-SELECT
LAFERT
LEESON
NORTH AMERICAN
SEMC
STERLING
TOSHIBA
US MOTORS / NIDEC
WEG

Electronic Brakes & Clutches

AUTO TECH
DYNACORP
INERTIA DYNAMICS
MOTORTRONICS

Enclosures

SAGINAW
TANCO

Enclosure Fans

PFANNENBERG

Industrial Controls

LOVATO ELECTRIC
NORTH AMERICAN
WEG

Instrumentation

LOVATO ELECTRIC

Limit Switches

LOVATO ELECTRIC
PRECISION

Miscellaneous Products

Analog and Digital Meters
Coils, Fuses
Miniature Light bulbs
Motor Winding Heaters
Solenoid Valves
Switches: Pressure/Temperature
Tachometer Generators
Transducers

Motor Bases

OVERLY HAUTZ

Motor Overload Protectors

LOVATO ELECTRIC
REGAL PTS
WEG

Motor Starters

LOVATO ELECTRIC
WEG

Programmable Controllers

LOVATO ELECTRIC

Pushbuttons & Pilot Lights

LOVATO ELECTRIC
WEG

Robots

NACHI

Sensors & Switches

BOSTON / ALTRA
LOVATO ELECTRIC
TELCO
WEG

Soft Starters

LOVATO ELECTRIC
MOTORTRONICS
NORTH AMERICAN
SAFTRONICS
WEG

Switchgear

TOSHIBA

Transformers

WEG

Vacuum Contactors

TOSHIBA

*** SERVICES ***

AC Drive Repair
AC Drive Startup
Circuit Board Repair
DC Drive Repair
Electric Motor Repair



E
L
E
C
T
R
I
C
A
L



Locations across the upper Midwest to serve you

MINNEAPOLIS

1213 HARMON PL
MN 55403-1993
612-332-0331
612-332-0384 FAX
1-800-314-2747

MANKATO

339 WEBSTER AV
MN 56003
507-387-4411
507-387-5176 FAX
1-800-914-2747

WAITE PARK

733 JULEP RD
MN 56387-1863
320-656-0055
320-656-0054 FAX
1-800-494-2747

SIoux FALLS

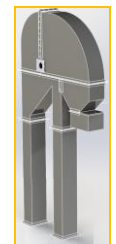
3321 N POTSDAM
SD 57104
605-333-4884
605-332-6263 FAX
1-800-574-2747

FARGO

4340 15TH AV NW
ND 58102
701-282-5242
701-282-5442 FAX
1-800-654-2747

www.anderson-crane.com

INDUSTRIAL SOLUTIONS YOU CAN TRUST™



SINCE 1944